

# G-ABA

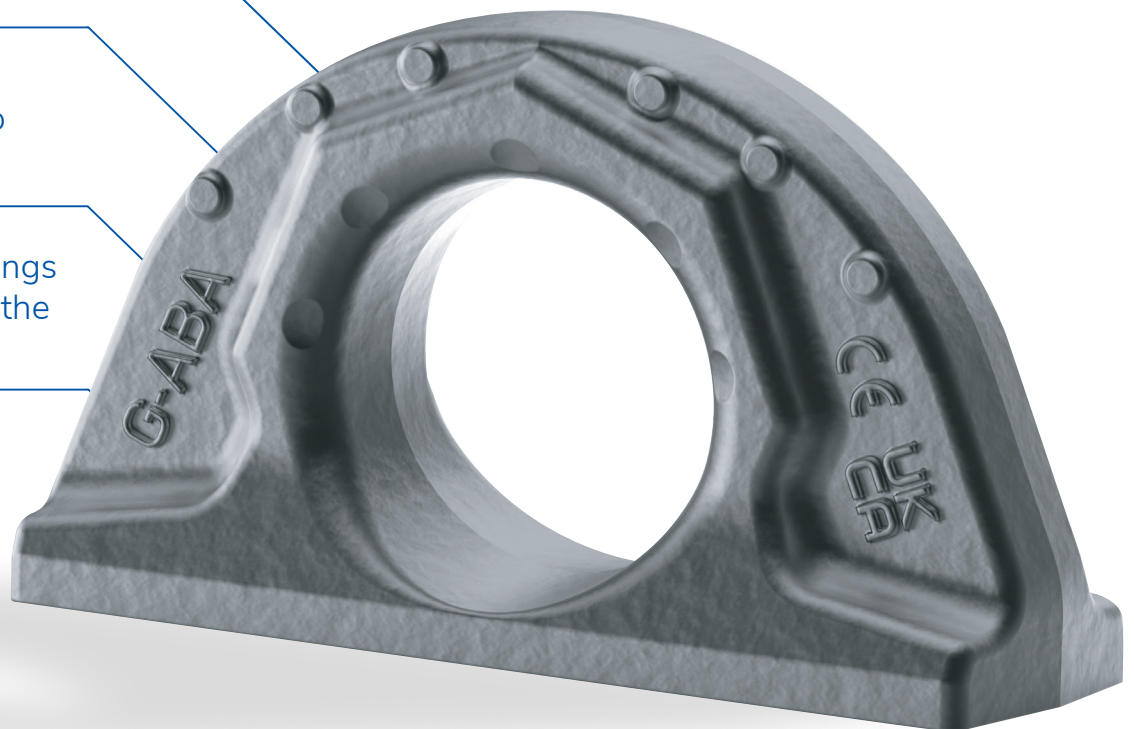
Weld-On Lifting Point for Galvanising



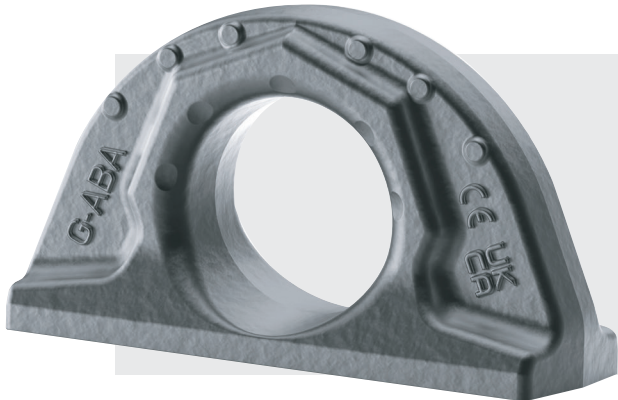
Full WLL in any direction  
with 4:1 design factor

Optimised for hot dip  
galvanising

Patented wear markings  
on the inside and on the  
outside



## Product features / G-ABA Lifting Point



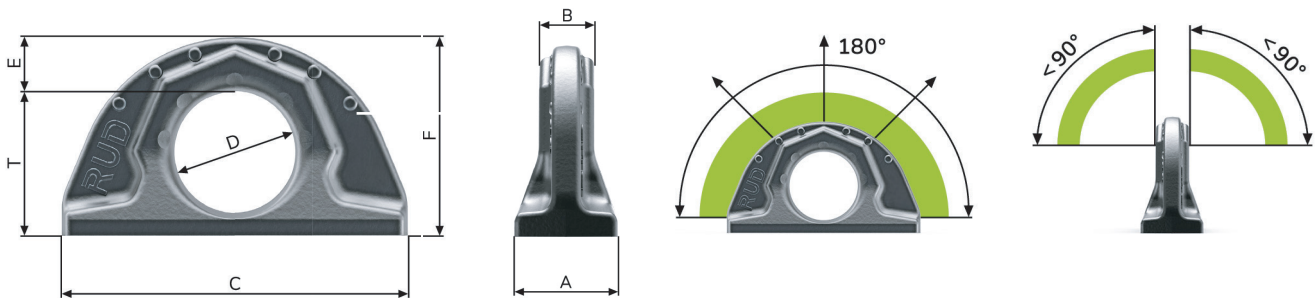
### Optimised for hot dip galvanising

Part of the ABA family, the G-ABA is optimised for hot dip galvanising. Comes with wear markings for safety and the endless weld seam prevents formation of contact/crevice corrosion

- ✓ Full WLL in any direction with 4:1 design factor
- ✓ Optimised for hot dip galvanising
- ✓ Clear marking of the WLL for all loading directions
- ✓ Patented wear markings on the inside and outside
- ✓ Closed and circumferential fillet weld
- ✓ Temperature Range -40°C to 200°C no reduction in WLL

TYPE	WLL [kg]	WEIGHT [kg]	T	A	B	C	D	E	F	Reference Number
G-ABA-1 t	1000	0.55	42	32	18	104	35	18	59	7913870
G-ABA-2.5 t	2500	1.36	59	41	29	137	50	21	80	7913871
G-ABA-4 t	4000	2.93	72	59	35	176	60	27.5	99	7913872

Dimensions and specifications subject to change



Marine and Offshore



Construction



Mining

#### Head Office

12 Commerce Place, Larapinta QLD 4110  
T: +61 7 3809 1300 F: +61 7 3809 1301

#### WA Office: Perth

107 Broadway, Bassendean WA 6054  
T: +61 8 6278 1788 F: +61 8 6278 4788

E: sales@rud.com.au  
W: www.rud.com.au  
ABN: 74 010 547 949

