



Proudly supporting Australia's transport industry

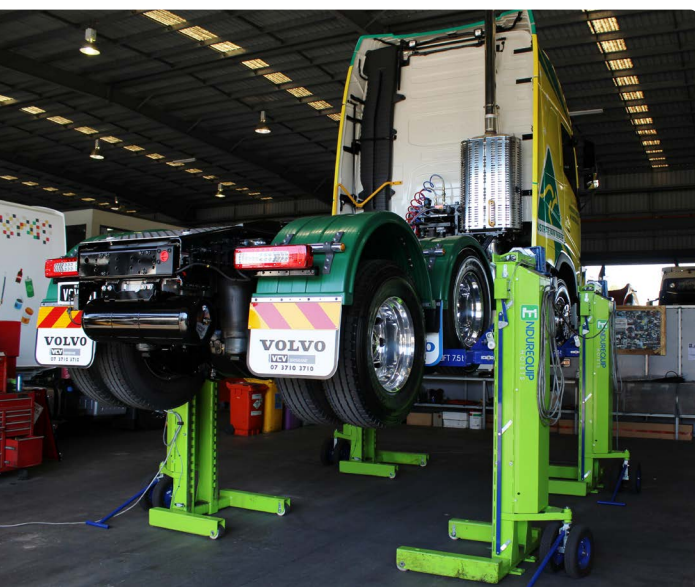
Australians have trusted RUD to provide heavy vehicle lifting solutions for trucks, buses, and rail. We are known for Endurequip Portalift which is the only Australian-made, chain driven, mobile heavy vehicle hoist symbolising quality and technology for the most arduous Australian applications. We also offer a high quality German wireless mobile heavy vehicle hoist, Finkbeiner which is reputed around the world for quality and innovation.

Streamline your efficiency and minimise downtime with our mobile heavy vehicle hoist range which provide a solution for every workshop application across Australia.

Whether you operate a large fleet or a specialised repair shop, our heavy vehicle hoists deliver the lifting capacity and portability, so your heavy vehicle servicing can operate smoothly.

RUD®

MOBILE HEAVY
VEHICLE HOISTS



Heavy Vehicle Hoists from RUD



Fully Mobile

Our heavy vehicle hoists are completely mobile, allowing you to easily position them for on-site repairs.



Unmatched Versatility

Our hoists are built to handle the toughest jobs in combination of up to 20 hoist sets to offer you lifting capacities from 30 to 170 tonnes.



Unwavering Quality

Both Endurequip (manufactured in Brisbane) and Finkbeiner (manufactured in Germany) adhere to the highest Australian and international standards.



Nationwide Service and Support

Our nationwide network of authorised service agents cover you across Australia.



The Only Australian-Made Mobile Heavy Vehicle Hoist

Built Aussie, Built for Strength

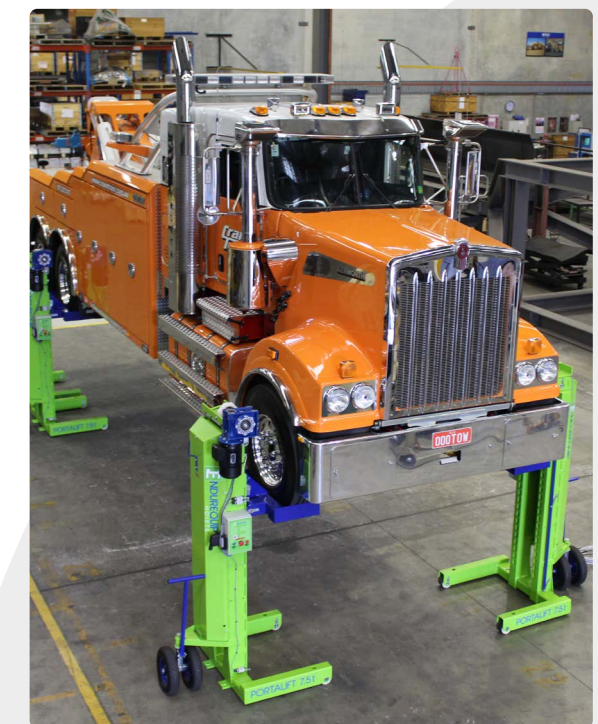
Endurequip Portalift is Australia's No. 1 chain-driven mobile heavy vehicle hoist, designed and manufactured in Brisbane. It is the go-to brand for transport and logistics companies seeking a safe and convenient hoist solution for heavy vehicle repairs.

Setting the Standards for Excellence

Endurequip Portalift is built to the strictest Australian standards (2550.9.1996, AS/NZS 2538:2004, ISO9001) and features a range of safety measures such as emergency stops, remote control and a keyed safety lock to ensure your team works safely and confidently on every heavy vehicle repair job.



ENDUREQUIP
HOISTS






Chain-Driven Hoist

Endurequip Portalift has a unique chain drive system featuring top-of-the-line RUD calibrated chain and pocket wheels. This combination delivers unmatched reliability and makes the Portalift the safest and most dependable hoist in the market.

Portalift - Chain-Driven & Robust

Endurequip Portalift hoists are the most economical mobile heavy vehicle hoists. Check out the benefits of buying a Portalift and why they are a smart investment for your workshop.

-  **Unbeatable Longevity:** With an unbeatable warranty, the Portalift delivers long-term peace of mind for your workshop. You can focus on what matters - keeping your fleet running.
-  **Simple Efficiency:** The Portalift's design minimises downtime and keeps things running smoothly. And being wired means there is no battery - it's an eco-friendly choice.
-  **Rock-Solid Reliability:** The Portalift operates on the most robust chain drive system, lasting up to 25 years even with frequent daily use.

- Maximum lifting capacity of 7.5t per hoist
- Can be used in configuration of 4, 6, 8 or 10 hoists
- IP65 water-resistant and dustproof rated
- Can be used outside in wet weather and wash bays
- Operational and safety features can be visually inspected
- Maximum lifting height - 1600mm
- Column length - 1390mm, column width - 1072mm, column height - 2480mm



Without Trucks, Australia Stops! But when trucks need to go, Endurequip keeps them going!



Improve Workshop Efficiency with Finkbeiner Hoists

German Engineering, Global Strength

Founded in 1927 in Germany, Finkbeiner is reputed for state-of-the-art design, quality, and reliability. Backed by a robust global distribution and service network, Finkbeiner empowers you to keep your workshop running smoothly, anywhere in the world.

Finkbeiner - Hydraulic & Wireless

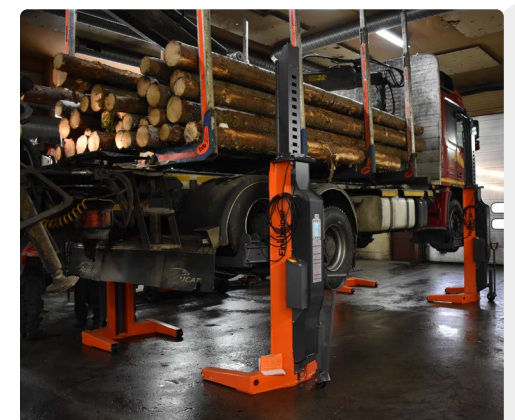
Finkbeiner hoists are the trusted partner for workshops around the globe. Here's why Finkbeiner elevates your workshop experience:

Efficiency: Finkbeiner hoists are known for simple setup and quick lifting speeds, saving you time and increasing productivity.

Maintenance: The Finkbeiner hydraulic system is virtually maintenance free, saving you time.

Engineered Excellence: Finkbeiner continuously improves hoist designs, for performance and long lasting reliability.

- Hydraulic drive
- Wireless control with LCD display
- Operation up to 20 columns
- Wireless communication via radio control
- Can operate in single, pairs or groups
- Power supply by maintenance-free deep cycle batteries
- Adjustable wheel forks to suit tyre sizes from Ø 550-1140mm
- Easy and simple battery charging with one power source per lift set



Not just a hoist, but a commitment to workshop excellence.

HOIST ACCESSORIES: Empower Your Workshop, Enhance Your Workflow



Elevate your workshop capabilities with our range of premium accessories, designed to seamlessly integrate with your hoists.



Vehicle Stands

Vehicle stands provide a stable platform for your vehicle at any height, offering unmatched flexibility when combined with hoists. They allow you to lift different vehicles, with adequate and safe access to wheels and tyres for faster repairs and maintenance. Chamfered head design ensures quick positioning under your vehicle, and we also offer custom stands to meet your specific needs.



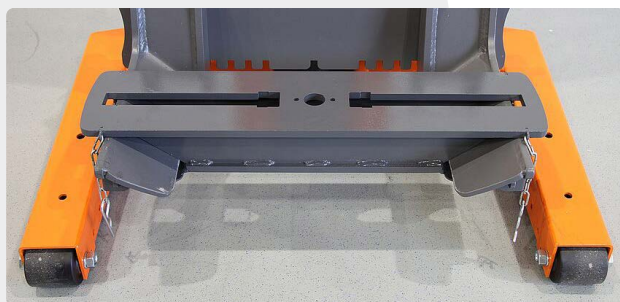
A-Frame Trailer Adaptors

Our A-frame trailer adaptors eliminate the need for additional equipment and are available in standard layouts with a powerful 12-tonne lifting capacity. Choose from kingpin sizes of 89mm and 111mm to perfectly match your trailer configuration.



Drive-On/Drive-Off Vehicle Ramps

Our drive-on/drive-off vehicle ramps enable a smooth flow of vehicles in and out of your workshop, reducing downtime. Replicating the functionality of a traditional pit without the safety hazards, our ramps prioritise safety while increasing efficiency. Available in standard lengths of 10m (20-tonne capacity) to accommodate a wide range of vehicles.



Cross Beam Adaptors

Cross Beam Adaptors permit you to lift agricultural machinery such as tractors, by positioning the hoists at the front and back of the tractor. Available in lengths of 880mm, they are mounted on to the wheel forks of columns EHB907V11DC/EHB908V11DC.

Hoist Accessories: Engineered for performance, built for efficiency, designed for your workshop success.



A Legacy of Lifting Excellence, Powering Your Workshop Success

For over 140 years, RUD has been a cornerstone of the global lifting and chain technology industry. Founded in Germany by the Rieger family in 1875, RUD's commitment to excellence has fuelled its growth into a global leader with over 1700 employees across 40+ countries and over 500 international patents.

RUD's Australian chapter began in 1984 with a head office in Brisbane and spread to branches nationwide. We understand the unique challenges faced by Australian industries, from defence and infrastructure to mining and transport and offer solutions for lifting, lashing and moving.

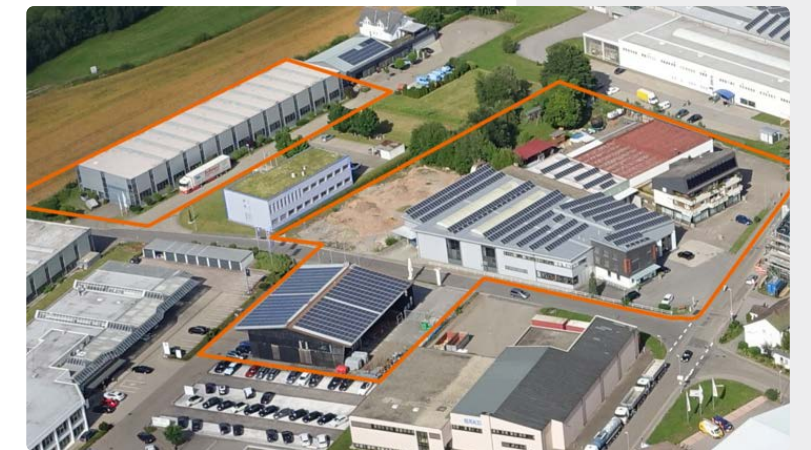
An Unmatched Product Portfolio:

- Offering over 700 certified lifting and lashing products, including ICE Grade 120 chains, ensuring secure lifting and movement of heavy loads in any direction.
- Offering high-performance conveyors and drives to optimise material handling, energy production, and drive technology.
- With over 65% of the world's tyre protection chain market, we offer solutions for wheeled machinery in the demanding environments of mining and quarrying.
- We provide concept-to-completion bespoke engineered solutions tailored to your specific needs, to maximise efficiency and safety.



A Legacy of Innovation

Since 1927, Finkbeiner has been a driving force in vehicle lift technology. Headquartered in Freudenstadt, Germany, the passion for innovation has propelled Finkbeiner to the forefront of the industry. Over the years, Finkbeiner has meticulously built a global reputation for state-of-the-art lifting solutions with quality and cutting-edge design.



Pioneers in Flexibility: Finkbeiner invented both hydraulic mobile column lifts and the Y-tec semi-scissor platform lift, changing the landscape of workshop flexibility.

Uncompromising Commitment: Every Finkbeiner hoist adheres to the strictest quality standards which ensures each hoist can deliver performance and reliability for years.

Global Support: Finkbeiner offers an extensive service network to guarantee quick and hassle-free installation, empowering you to get your workshop up and running in the quickest time.



Want more details on our hoists?

Contact us today for more details on the best hoist suited for your specific requirements.

Head Office

12 Commerce Place, Larapinta QLD 4110

T +61 7 3809 1300

W: www.rud.com.au

E: sales@rud.com.au

Perth Office

107 Broadway, Bassendean WA 6054

T +61 8 6278 1788

