

Block connector for mining chains acc. to DIN 22258-3



RUD block type POWERBLOCK connectors run vertically over sprockets and are used in high performance mining applications.

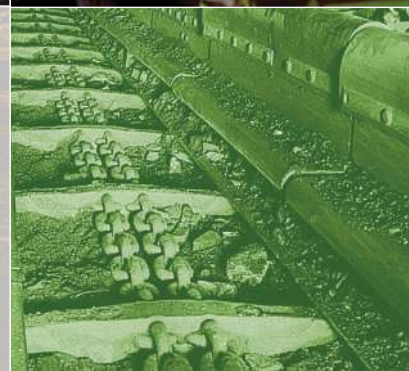
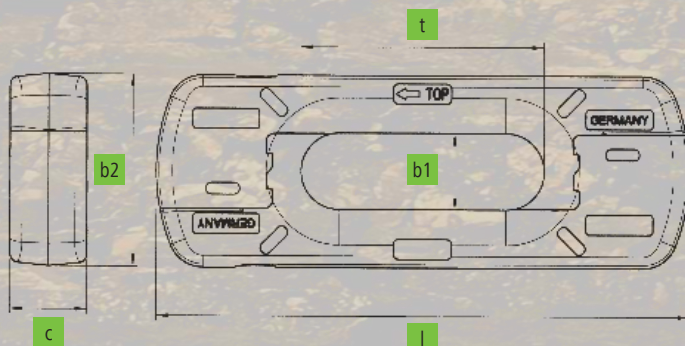


POWERBLOCK Chain Connector

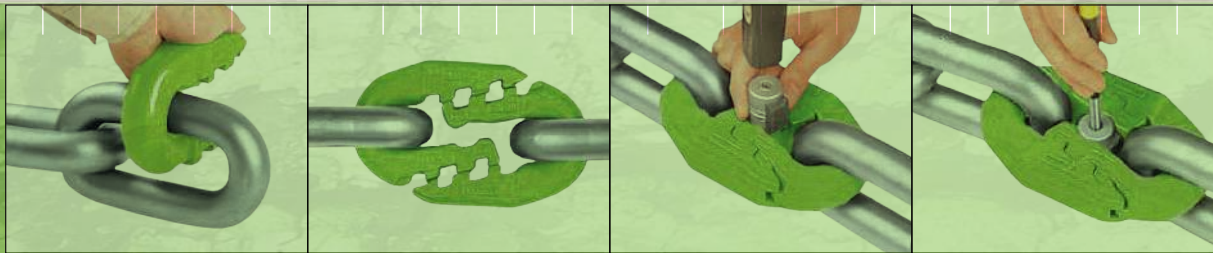
d x t (mm)	Size				Breaking load kN*	Breaking Strength N/mm ² *	Cycles **
	b1	b2	c	l			
34 x 126	38	99	36	280	1450	800	70,000
38 x 137	41	111	40	308	1820	800	70,000
42 x 146	45	109	46	320	2350	850	70,000
42 x 146	45	115	46	320	2350	850	70,000
48 x 144	51	116	58	344	3100	800	70,000
48 x 144	51	125	58	344	3100	800	70,000
48 x 152	52	116	51	346	2900	800	70,000
48 x 152	52	127	51	346	2900	800	70,000

* +/- 5 %

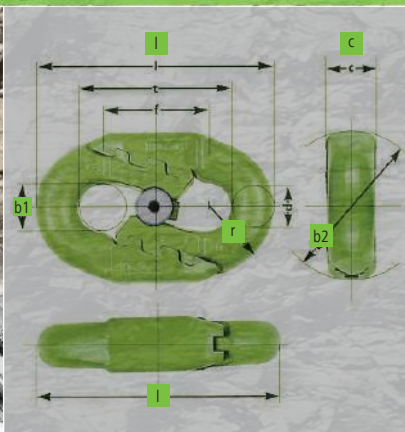
** High + low tension acc. to DIN 22258



Flat connector for mining chains acc. to DIN 22258-1



RUD flat DOMINATOR connectors can be used either vertically or horizontally in round link chain strands and are used in underground mining applications.



DOMINATOR Chain Connector

Size		Breaking load		Breaking strength		Cycles **			
d x t (mm)	b1	b2	c	f	l		r	kN*	N/mm ² *
22 x 86	24	85	26	58	132	34	645	850	90,000
26 x 92	28	95	33	62	146	40	900	850	90,000
30 x 108	32	109	36	70	170	47	1200	850	150,000
34 x 126	36	120	40	76	196	52	1540	850	150,000
38 x 126	41	134	45	76	204	58	1925	850	150,000
38 x 137	41	134	45	88	215	58	1925	850	150,000
42 x 146	50	150	51	78	232	65	2350	850	120,000
42 x 152	50	150	51	80	238	65	2350	850	120,000

* +/- 5 %

** High + low tension acc. to DIN 22258

Head Office: Brisbane

12 Commerce Place, Larapinta, Brisbane QLD 4110

T: +61 7 3809 1300 • F: +61 7 3809 1301 • info@rud.com.au www.rud.com.au

Branch: Perth

