

Washer EN 14399-T6 - 37 (for M36)

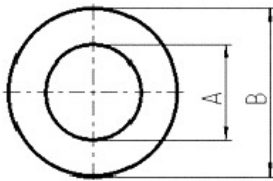
Artikel-Nr: 8801027



Washer according to EN 14399-T6 (DIN 6916), Surface: zinc - plated With a crack detected hexagon nut (extra item) suitable for the assembly of lifting points with long threaded bolts for example in through holes.

Washer EN 14399-T6 - 37 (for M36)

Artikel-Nr: 8801027



weight	0.12 kg	0.25 lbs
T	6 mm	15/64"
A	37 mm	1-29/64"
B	66 mm	2-19/32"