

Washer EN 14399-T6 - 25 (for M24)

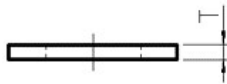
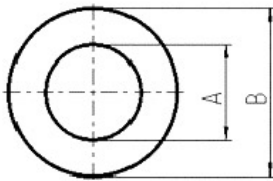
Artikel-Nr: 8801025



Washer according to EN 14399-T6 (DIN 6916), Surface: zinc - plated With a crack detected hexagon nut (extra item) suitable for the assembly of lifting points with long threaded bolts for example in through holes.

Washer EN 14399-T6 - 25 (for M24)

Artikel-Nr: 8801025



weight	0.03 kg	0.07 lbs
T	4 mm	5/32"
A	25 mm	63/64"
B	44 mm	1-47/64"