

Washer EN 14399-T6 - 21 (for M20)

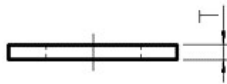
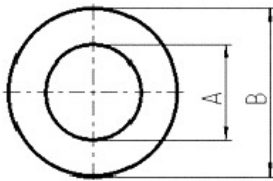
Artikel-Nr: 8801024



Washer according to EN 14399-T6 (DIN 6916), Surface: zinc - plated With a crack detected hexagon nut (extra item) suitable for the assembly of lifting points with long threaded bolts for example in through holes.

Washer EN 14399-T6 - 21 (for M20)

Artikel-Nr: 8801024



weight	0.02 kg	0.04 lbs
T	4 mm	5/32"
A	21 mm	53/64"
B	37 mm	1-29/64"