

Washer DIN 125-A15 (for M14)

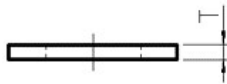
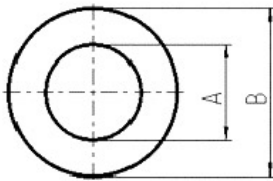
Artikel-Nr: 67925



Washer according to DIN 125, Surface: zinc - plated With a crack detected hexagon nut (extra item) suitable for the assembly of lifting points with long threaded bolts for example in through holes.

Washer DIN 125-A15 (for M14)

Artikel-Nr: 67925



weight	0.01 kg	0.02 lbs
T	3 mm	1/8"
A	15 mm	19/32"
B	28 mm	1-1/8"