

Eye nut RM - M24X2

Artikel-Nr: 7907625



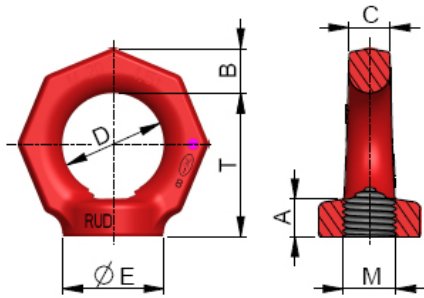
For the RUD RM - eye nuts, the threaded connector component must be of at least quality grade 8.8

- Considerably higher WLL (in comparison to DIN 582) at vertical load.
- Large thread and WLL range (M6-M48, 0.1 t – 8 t).
- Clear marking of the minimum WLL for all loading directions.
- Quick and easy installation with just one bolt connection.

Other important RUD specific information and specialities to our RUD lifting points can be found in the specific user instruction.

Eye nut RM - M24X2

Artikel-Nr: 7907625



weight	0.70 kg	1.54 lbs
Nominal WLL	2000 kg	4400 lbs
T	70 mm	2-3/4"
A	20 mm	3/4"
B	21 mm	13/16"
C	20 mm	3/4"
D	50 mm	1-31/32"
E	50 mm	1-31/32"
M	M24X2 mm	M24X2