

ACP-TURNADO SUPERMAX 32,5t 2 1/2"-4UNC

Artikel-Nr: 7912639



The RUD ACP-TURNADO SUPERMAX sets new standards for the safe lifting of valuable loads. Thanks to its innovative, optimally protected internal spring mechanism, its lift bail immediately turns into the load direction when the load is lifted, so it cannot remain vertical. Dangerous transverse loads and a sudden drop of the load by sudden turning into the load direction are therefore impossible.

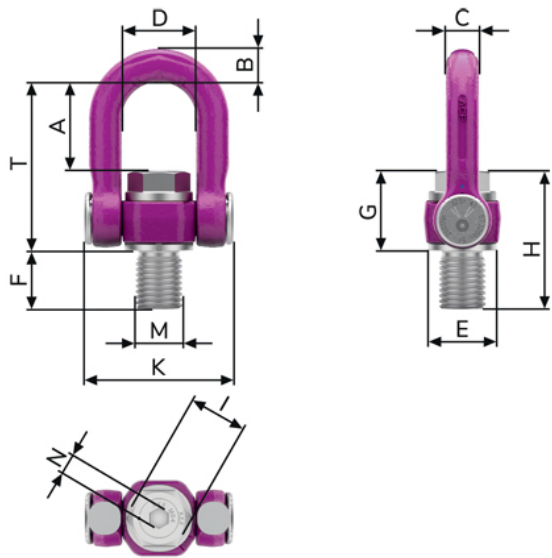
Your benefits:

- Innovative, protected internal spring mechanism – prevents the lift bail from stopping.
- Deflector disc with angle marking, WLL information in “t” and “lbs”, safety factors, and torque moment.
- Threaded rod – firmly connected.
- Free space for individual marking/stamp.
- Integrated RFID transponder to make checks easier.
- Swivel joint in the lifting ring axis.
- Wear lenses for checking discard criteria.

Other important RUD specific information and specialties to our RUD lifting points can be found in the specific user instruction.

ACP-TURNADO SUPERMAX 32,5t 2 1/2"-4UNC

Artikel-Nr: 7912639



weight	17.19 kg	37.90 lbs
Nominal WLL	32500 kg	57320 lbs
T	232 mm	9-1/8"
A	123,5 mm	4-7/8"
B	45 mm	1-25/32"
C	45 mm	1-25/32"
D	103 mm	4-1/16"
E	95 mm	3-3/4"
F	79 mm	3-1/8"
G	108 mm	4-1/4"
H	187 mm	7-3/8"
I	75 mm	2-15/16"
K	204 mm	8-1/32"
M	2 1/2"-4,5UNC mm 2 1/2"-4,5UNC	
N	24 mm	15/16"