

GERMAN QUALITY
AND ENGINEERING



**CEMENT AND
ASPHALT SOLUTIONS**



The RUD Difference

For over 140 years The RUD Group, founded in Germany, have offered unsurpassed quality and excellence in steel chain technology. In Australia, RUD has been a trusted partner in the delivery of conveying and material handling solutions for cement and Asphalt industries since 1984. German engineered reliability, delivered by local experts, inspiring complete confidence- The RUD Difference.

Safety in Design

Our extensive experience in safe material handling system design ensures that you receive a solution that is perfectly aligned with your safe transportation and processing needs. Innovative low maintenance conveyor systems provide safer performance and controlled processes, resulting in effective processing of materials.

Continuous Performance and Reliability

With extensive experience in bulk conveyance of cement, Asphalt, fertilisers, potassium & salt and other special bulk materials, our system components are designed to keep on working- no matter the conditions. From transporting limestone from the mill or conveying salts from the mine to the surface, our conveyor systems are robust and are optimally designed for the toughest of conditions.

Efficiency in Productivity

RUD prides itself as a sector partner through its delivery of smart system design through to componentry and modules. We are focussed on helping to maximise efficiency in production and processing environments through strict quality assurance and ongoing innovation.

Central Chain Bucket Elevator Conveyor

APPLICATIONS



CEMENT



GRAVEL



LIMESTONE



SLAG

SPECIFICATIONS

Size

RUD Hardened chain
sizes (mm)

10 x 38 19 x 75

14 x 50 22 x 86

Capacity

0 to 1200 tonne per hour

Height

From 230mm

MAXIMUM CAPACITY, TOUGH APPLICATIONS, PROVEN DESIGN

RUD central chain bucket conveyors provide a robust means of traction for vertical conveying of powdery, granular, lumpy and high-temperature materials. Safe transport of abrasive materials is also guaranteed. RUD central chains offer maximum conveying reliability, even when handling charge fluctuations, high-temperature materials, and materials with large single edge lengths.

Reliability

- Vertical conveying applications
- Suitable for granular, lumpy materials
- Wear resistant RUD chain provide long life solutions

Flexibility

- Dust free modular casings
- Centrifugal discharge
- Gravity discharge

Productivity

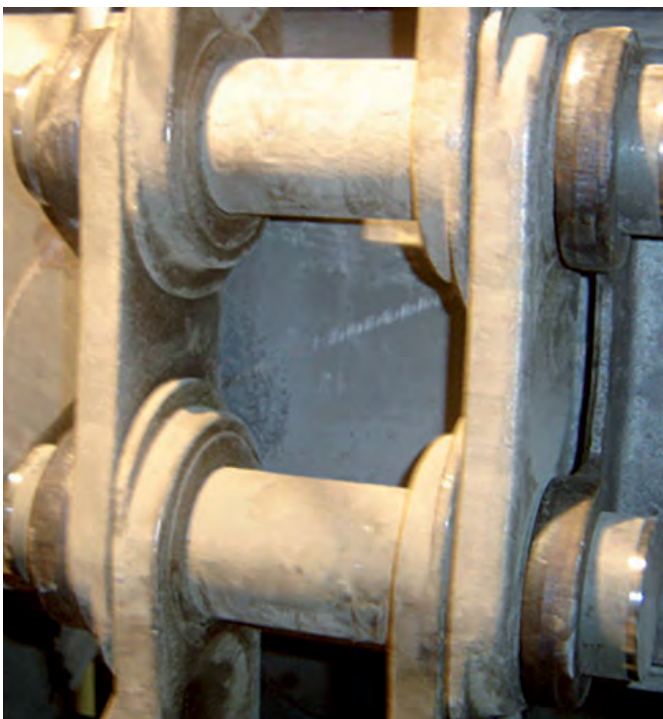
- High capacity conveying
- Friction or toothed wheels

Durability

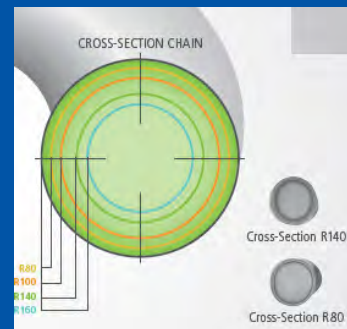
- Suitable for high temperature applications
- Chains have hardened properties
- Matched components for optimum performance

Serviceability

- Fast replacement bolt-on wheel tooth segments
- Easy access drive components
- Clearly visible wear indicators



Bucket Elevator Mounting Attachments



RUD Highly wear resistant round steel link chains provide case hardened surfaces for long life.

RUca Bucket Attachment

RUca is the alternative for DIN bucket attachment systems for round steel bucket elevators. Due to the smooth interaction with RUD chains and RUD chain connectors, RUca always provides force and shape-fit connections, reducing chain wear and providing maximum protection against breakage. It is an optimal replacement for existing DIN bucket holders in round steel chain bucket elevators and the first choice when installing new systems.

- Less wear and tear on chain
- Highly flexible application- is suitable for endless chain strands, runs over uncoated wheels and can be mounted quickly
- Higher component break resistance
- Deal for use with 20 x 100 RUD chain



SYSTEM 2win

Endless chain strands can also be used in the 2win double-link attachment system. The attachment runs on toothed or non-toothed wheels. The system is characterised by the speed at which it can be mounted and dismantled without specialised tools. The 2win System replaces all established bucket back wall attachments in the market.

- For use in bucket conveyors with up to 60 m height
- Endless chain strands can be used
- Short assembly and disassembly times, without special tools
- Bucket attachments run over sprocket wheels and plain wheels
- Suitable for replacing all the DIN bucket attachments in round steel link chain bucket elevators except side-wall attachments



SYSTEM 65

System 65, with its multiple-link attachment, is robust, highly wear-resistant and easy to mount. The buckets can be replaced easily. This system is suitable for heavy loads and high conveying speeds.

This system is particularly suitable for heavy operating conditions in the field of bucket elevators. Robust and highly wear-resistant, the System 65 optimises your processes with easy assembly and disassembly of buckets on the chains.



Apron Conveyors

APPLICATIONS



DRY ASH
HANDLING



MINERAL
PROCESSING



MINERAL
ORE



AGGREGATE



STEEL



RECYCLING

SPECIFICATIONS

Size

RUD Hardened
chain sizes (mm)

19 x 75 22 x 86
26 x 100 30 x 120

Capacity

0-300 tonne per hour

Height

Typically 500-780mm

Compact Design, Large Loads, Longer Life

RUD Apron Feeder Conveyors provide a compact solution for all horizontal and bunker loading applications. Even at lower heights, with minimal clearance our high strength, conveyors with heat treated chains are built to keep on turning. Our simple, robust design is German engineered for minimal maintenance and maximum efficiency.

More Efficient

- Unique fast-install plug style aprons
- Space saving reduced height design
- Compatible with low clearance environments
- Reduced downtime through our simple design
- Lower thermal energy loss
- Completely waterless operation

Built to Keep on Turning

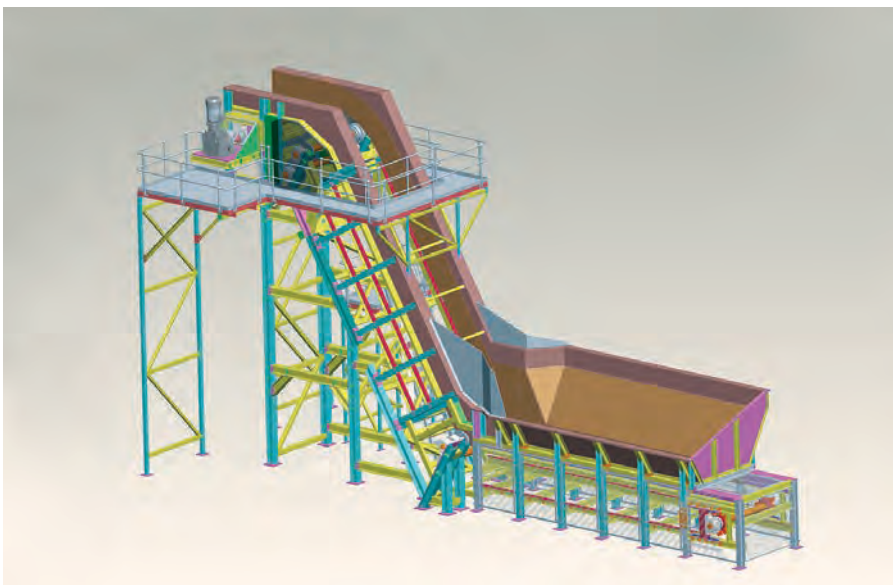
- Long lasting heat-treated components
- Wear resistant long-life design
- German engineering
- Easily handle high loads and strong impacts
- Highly calibrated components and plates ensure accurate efficient movement

Easily Adapt to Any Application

- Compatible with our reduced friction edge-roller system
- Suitable for horizontal and bunker loading applications
- Custom inclined angles available to support any environment
- Perfect for very abrasive or high temperature material.

Simple Maintenance

- Fast-swap modular components for reduced downtime
- Easy mounting and dismounting for quick service times
- Reduced maintenance cost as no chain lubrication necessary



RUD apron feeder provides storage, metering and elevation of the product.



A RUD tumble back apron feeder processing flock ASR material.

Trough Chain Conveyors

APPLICATIONS



CEMENT



CONSTRUCTION



CHEMICALS



RECYCLING

SPECIFICATIONS

Size

RUD Hardened chain sizes (mm)

19 x 75 22 x 86

26 x 100 30 x 120

Capacity

0-300 tonne per hour

Height

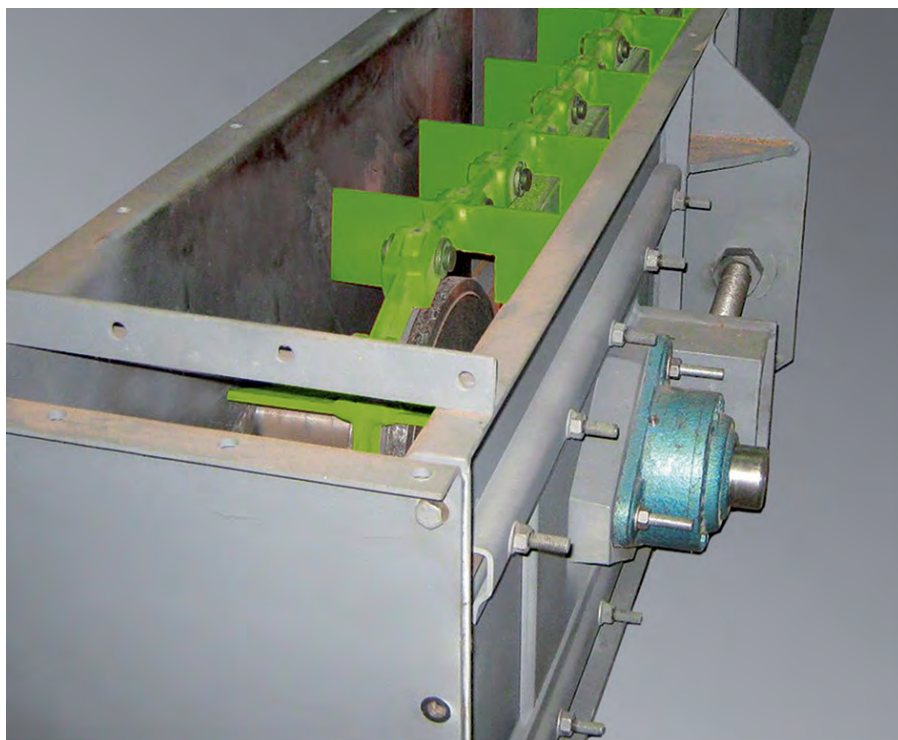
Typically 500-780mm

Trough Chain Conveyors

Trough chain conveyors are especially suitable for the dust-free, horizontal and moderately inclined transport and metering of bulk materials, including coarser type material. Trough chain conveyors combine high wear and heat resistance with the option of multiple inlets and outlets.

Trough chain conveyor systems use RUD forged for link chain. These systems are ideal for the conveying of powdery, grainy, flaky or dusty material.

- The trough consists of individual, standard-length sections with connecting flanges.
- Hold-down rails are recommended for most of the materials to be conveyed. These prevent the material from building up and the chain climbing. For moderately abrasive materials, the side walls and base plate are protected by manganese alloy steel against wear.
- The driving and return sprockets are highly wear-resistant
- Safety as a standard- speed governors and take-up screw monitors detect the operating status of the trough chain conveyor.



Chain Driven Belt Feeder Conveyors

APPLICATIONS



ENERGY



MINERAL



CEMENT



SOIL &
CONSTRUCTION
WASTE



WASTE
HANDLING

SPECIFICATIONS

Size

RUD Hardened
chain sizes (mm)
19 x 75
22 x 86

Capacity

1-2.4 Tonne per hour

Height

2300 mm

Greener Processing, Any Application, Safety First

RUD Chain Driven Belt Feeder Conveyors offer a more efficient solution for processing all types of material. Our robust combined belt and chain drive system has been engineered for maximum throughput, less downtime and longer life. Reduce your environmental impact by processing solids faster with complete safety, control and confidence. Our Belt Feeders can handle even the most hazardous waste applications with German engineered precision.

More Efficient

- Space saving reduced height design
- Compatible with low clearance environments
- Reduced downtime through our simple design
- Lower thermal energy loss
- Completely waterless operation
- Allows loading from truck or mobile plant
- Stores the product then elevates to the discharge position in one process

Simple Maintenance

- Fast-swap modular component for reduced downtime
- Easy mounting and dismounting for quick service times
- Reduced maintenance cost as no chain lubrication necessary

Easily Adaptable to Any Application

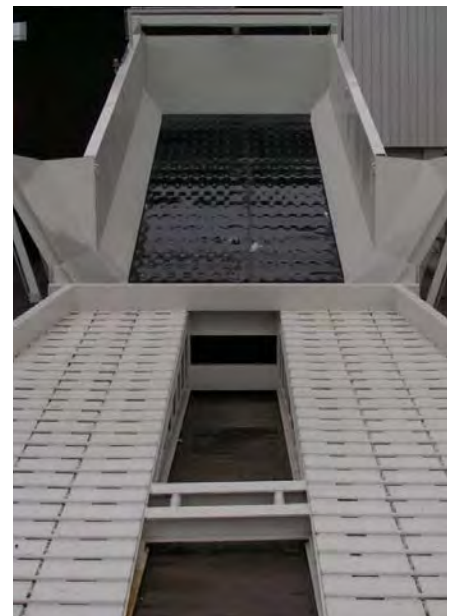
- Compatible with our reduced friction edge-roller system
- Custom inclined angles available to support any environment
- Suitable for horizontal and inclined operations
- Perfect for very abrasive or high temperature material

Built to Keep on Turning

- Long lasting heat-treated components
- Wear resistant long-life design
- German engineering
- Highly calibrated components and plates ensure accurate, efficient movement



RUD unloading ramp system for truck unloading into the conveyor.



RUD unloading ramp system for truck unloading into the conveyor.

Spillage Drag Conveyors

APPLICATIONS



DRY ASH HANDLING



MINERAL PROCESSING



MINERAL ORE



AGGREGATE



STEEL



RECYCLING

SPECIFICATIONS

Size

RUD Hardened chain sizes (mm)

10 x 38 19 x 75
14 x 50 22 x 86

Capacity

0 to 5 tonne per hour

Height

From 230mm

Less Maintenance, More Uptime

RUD spillage chain conveyor systems provide a robust, compact and efficient solution for low profile, reduced access applications. Our heavy duty hardened-steel chain systems require less maintenance and enhance workplace safety. The system can be fully enclosed to allow dust-free and watertight transport of bulk material, efficiently.

Recovers valuable product

- Recycles waste material back into the discharge chute
- Avoids material build up against belts or feeders causing surface wear
- Eliminates stockpiles and build-up of waste
- Better plant cleanliness and automated removal
- Segregates spillage

Built to Keep on Turning

- Long lasting hardened steel chains
- Highly wear resistant components
- Minimal adjustment required
- Zero lubrication necessary

More Efficient

- Highly efficient conveying system
- Reduced downtime through simple maintenance
- Compatible with full submersion environments
- Accurate alignment with close tolerances
- Perfect for areas with access issues

Safety First

- Reduced accidents as access under moving conveyors is no longer necessary
- No need to cleaning under conveyors
- Enhanced compliance with legislative requirements

Simple Maintenance

- Fast replacement bolt-on wheel tooth segments
- Easy access drive components
- Clearly visible wear indicators

Easily Adapt to Any Application

- Easy to relocate modular design
- Full variable conveyor length
- Low profile height for under belt or apron systems
- Plug-in scrapers available in various pan widths
- Custom scraper designs for different material



RUD spillage conveyor is at same angle and width and discharges into the chute.



Drag chain systems remove dust, and collect the product for further processing or storage.

Belt Bucket Elevators

APPLICATIONS



LIMESTONE



MINERAL
PROCESSING



CEMENT



SLAG



COAL



RECYCLED
MATERIALS

SPECIFICATIONS

**Size
(Bucket Width)**
250 to 1250 mm

Capacity
0-1200 tonne
per hour

Height
Maximum 70m

Maximum Capacity, Tough Applications, Proven Design

RUD's belt type bucket elevators are reinforced with either textile or steel inlays to ensure the easy transportation of conveyed material with maximum performance and efficiency.

Reliability

- Quality components reduce downtime.
- Modular drive drum and lagging.
- Low wear from matched drive.
- Uniform belt loading across full drum width.

Flexibility

- High temperature rubber compositions suitable for a range of applications.
- Bucket holes cut by water jet for accurate assembly.
- Component spares packages available for retro-fit.

Productivity

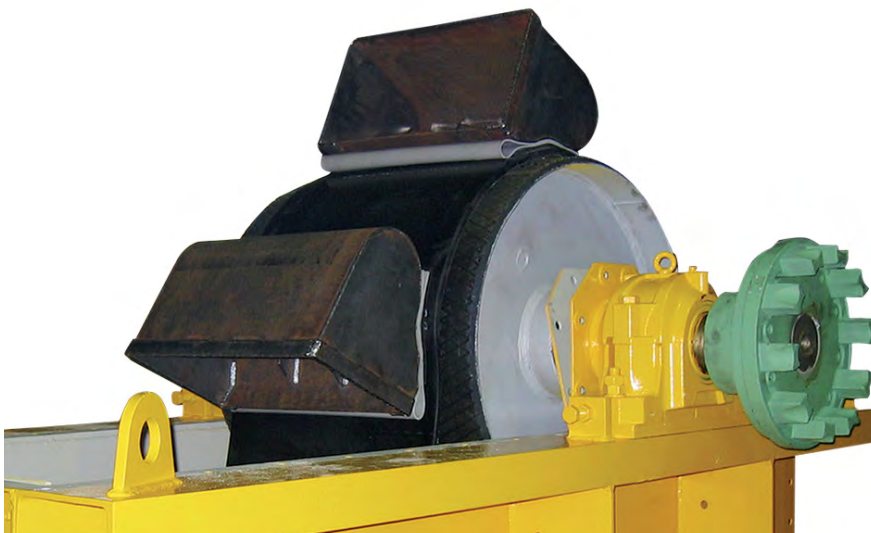
- Automatic belt tensioner.
- Low pretension forces for maximum efficiency.

Durability

- Stability in belt provides long life.
- Tensile strength of belts provide low elongation.
- Steel cross bracing provides transverse stability.

Serviceability

- The friction lining is easily exchangeable when worn. n Drive drum easily installed or removed for servicing. n Segments of drum are re-usable.
- Endless connection by hot vulcanisation or RUD clamp system.
- Access doors provide easy inspection.



TECDOS

SPECIFICATIONS

Range and WLLs

TEC 6 (5.2 x 15mm)-6kN

TEC 12 (7.2 x 21mm) – 12kN

TEC 25 (10 x 28mm) – 25kN

TEC 43 (13 x 36mm) – 43kN

TEC 65 (16 x 45mm) – 65kN

TEC 140 (23.5 x 66mm) – 140kN

TEC 260 (32 x 90mm) – 260kN

Telescopic Drive Applications for low maintenance and continued performance

RUD's TECDOS driven telescopic chutes offer a low maintenance solution in the toughest environments. RUD's TECDOS chains offer high wear and corrosion resistance. The innovative design of TECDOS components provide flexible and customisable solutions, suited for both new chutes and the refurbishment of existing equipment.

Simple Maintenance

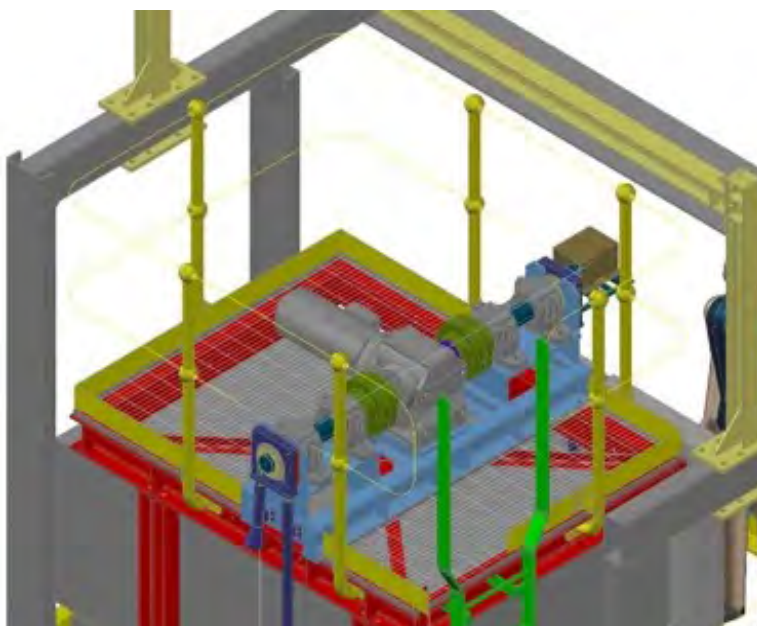
- TECDOS chains can be easily inspected
- The chains can be operated without lubrication.
- This also eliminates the risk of contamination due lubrication.
- The drives are fitted with maintenance free bearings.
- Designed for easy of replacement

Robust design

- TECDOS drives offer a modular and compact solution
- Calibrated load chain allows for controlled and accurate movement
- This is ideal for when operating in dusty environments.
- Simple design makes it easy to incorporate into new and existing designs
- Zinc coated chains improves corrosion resistance

More Than Just Chutes

- TECDOS range of components can be used horizontal, vertical, and rotational movements
- A wide range of sizes allow for a wide range of applications
- Can be fitted with a range of lifting and lashing components
- Can be customized to suit customer requirements



RUD Your Complete Solution Provider

Engineering Services

RUD's team of CPEng/RPEQ qualified engineers can oversee all facets of design, manufacture, testing and certification to deliver cost effective and practical solutions to engineering problems.

Specialties include:

- Product Certification
- Load Restraint Design and Service
- Lifting System Design
- Major Inspections, testing and commissioning



Lifting and Lashing Systems

RUD is a world market leader for lifting and lashing points for multi-directional loading.

- A full range of over 600 tested and certified lifting points from .05t to 100t Working Load Limit.
- ICE Grade 120 Lashing systems, ideal for heavy transportation sector, especially for securing loads and machinery or speciality loads requiring certification.



Heavy Vehicle Maintenance

Endurequip Hoists offer a durable, and highly portable solution for lifting all types of heavy vehicles.

- Our Australian Made hoist systems can be configured to safely lift vehicles up to 60 tonnes with ease.
- Simple electric design provide increased reliability and lower maintenance costs
- Product Life expectancy of 25 years providing excellent return on investment.



Tyre Protection and Traction Chains

RUD Tyre Protection Chains protect the tyre treads and sidewalls on wheeled machinery from damage and sudden-death failure.



Waste and Recycling Bins

RUD is the exclusive distributor of Glasdon Bins throughout Australia and New Zealand- designed to manage recyclable material efficiently.





Head Office: 12 Commerce Place Larapinta QLD 4110
Tel: +61 7 3809 1300

WA Branch: 107 Broadway Bassendean WA 6054
Tel: +61 8 6278 1788

Email: info@rud.com.au
Web: www.rud.com.au



Quality ISO 9001
Environment ISO 9001
Occupational Health and Safety ISO 45001
SAI GLOBAL SAI GLOBAL